



USE QR CODE ABOVE TO ORDER & PAY.

FNB CHOCOLATE BAR is a worldwide brand that brings flavors and inspirations from across the globe to all our branches.

Wherever you visit us, you will experience a journey of taste that carries with it the richness of different cultures.

At the heart of every creation is our authentic Belgian chocolate, crafted from bean to bar, ensuring that every bite delivers the finest quality and a little taste of the world.

FNB CHOCOLATE BAR IS ALWAYS LOOKING INTO CREATING DESSERT ART PIECES WHICH COME OUT OF THE ORDINARY. OUR MENU OFFERS VARIOUS SELECTIONS SATISFYING ALL THE DIFFERENT TASTES.

WE ARE PROUD TO HAVE OUR OWN PRODUCTION KITCHEN ENSURING THAT OUR INGREDIENTS ARE HOME-MADE SPECIALLY FOR OUR CUSTOMERS.

IN ADDITION, WE HAVE OUR OWN CUSTOMIZED AND REGISTERED CHOCOLATE LINE IN ONE OF THE PREMIUM CHOCOLATE FACTORIES IN **BELGIUM**.

WE INTEGRATE THE BEST TASTE, BEST SERVICES AND AMAZING ATMOSPHERE INTO ALL ASPECTS OF OUR BUSINESS FUNCTIONS TO ENSURE THAT OUR CUSTOMERS WILL HAVE A **MAGICAL CHOCOLATE EXPERIENCE** IN OUR SHOPS.



Scan the QR code to watch your dessert topped with chocolate and see all the details.



Each dessert has its own number for simple ordering.



The menu is organized into categories displayed at the top of each page.



Some desserts include a small number next to them, showing how many people they can serve.



Scan for nutritional facts and allergy information.



ORDER NO
01

BROWN PASTA

Crêpe pasta made with our signature dough, coated in chocolate, and served with brownie pieces, cream cheese and your choice of ice cream.

Brown Pasta



Scan to watch the item's video

ORDER NO
02

PASTA CRÊPE

Crêpe pasta topped with vanilla ice cream and drizzled with Belgian chocolate.

Pasta Crepe



Scan to watch the item's video

Chocolate Guide

Chocolate Guide

ORDER NO
03

FRUITS CRÊPE

Crêpe topped with fresh strawberries, pineapple, and banana, and drizzled with Belgian chocolate.



Scan to watch the item's video

Fruits Crepe

ORDER NO
04

BROWNIE CRUST CRÊPE

Crêpe with a brownie crust, filled with cream cheese, strawberries, pineapple and banana, drizzled with Belgian chocolate.



Scan to watch the item's video

Brown Crepe

ORDER NO
05

CHOCOLATE BAR ROLL

Rolled crêpe filled with brownies, éclair, strawberries, and cream cheese, topped with milk and white Belgian chocolate and Rice Krispies®.

Chocolate Bar Roll



Scan to watch the item's video

Rice Krispies is a registered trademark of Kellogg company

Banana Roll



ORDER NO
06

BANANA ROLL

Banana slices and cream cheese, wrapped in a crêpe, drizzled with Belgian chocolate.



Scan to watch the item's video

ORDER NO
07

PISTACHIO ROLL

Chocolate crêpe filled with pistachio ice cream, topped with milk and white Belgian chocolate, sprinkled with crushed pistachios.



Scan to watch the item's video

Pistachio Roll

BROWNIES CRÊPE

ORDER NO.
08

House-made brownies wrapped in a crêpe and drizzled with Belgian chocolate.



Scan to watch the item's video

*Brownies
Crepe*



ROSE CRÊPE

ORDER NO.
09

Crêpe filled with crème pâtissier, topped with Oreo® crumbs, strawberries, cookie pieces, caramel sauce and Belgian chocolate.



Scan to watch the item's video

*Rose
Crepe*



OREO® and the OREO® wafer design are trademarks of Mondelez International Group.

ORDER NO.
10

LOTUS® CREPE

Crepe filled with crème patisserie and Lotus biscuit®, topped with Belgian chocolate, and served with a scoop of Lotus® ice cream.



Scan to watch the item's video

ORDER NO.
11

COOKIES CRÊPE

House-made cookies wrapped in a crêpe, drizzled with Belgian chocolate.



Scan to watch the item's video

Cookies Crepe



ORDER NO.
12

OREO® CRÊPE

Oreo® cookies wrapped in a crêpe, drizzled with Belgian Chocolate.



Scan to watch the item's video

Oreo® Crepe



Lotus® Crepe

Lotus® is a registered trademark of Lotus® Bakeries, we are not affiliated with, sponsored by, or endorsed by Lotus® Bakeries.

OREO® and the OREO® wafer design are trademarks of Mondelez International Group.

BROWNIE POUCH

ORDER NO
13

Crêpe filled with brownies, cream cheese, and fresh strawberries, drizzled with Belgian chocolate.



Scan to watch the item's video

Brownie Pouch



For nutritional facts and allergy information, please refer to the QR code on the first page.

CINNAMON POUCH

ORDER NO
14

Crêpe filled with cream cheese, banana slices, and cinnamon, drizzled with Belgian chocolate.



Scan to watch the item's video

Cinnamon Pouch



For nutritional facts and allergy information, please refer to the QR code on the first page.

MALLOW CRÊPE

ORDER NO
15

Folded crêpe filled with marshmallows, drizzled with Belgian chocolate.



Scan to watch the item's video

*Mallow
Crepe*



CARAMEL CRÊPE

ORDER NO
16

Digestive biscuits coated in caramel, wrapped in a crêpe, and drizzled with Belgian chocolate.



Scan to watch the item's video

*Caramel
Crepe*



KUNAFI CRÊPE

ORDER NO
17

Crêpe filled with double cream, topped with kunafa and Belgian chocolate, served with pistachio ice cream and crushed pistachios.



Scan to watch the item's video

*Kunafa
Crepe*



Crepe
Crepe

Chocolate Guide

CLASSIC CRÊPE

ORDER NO
18

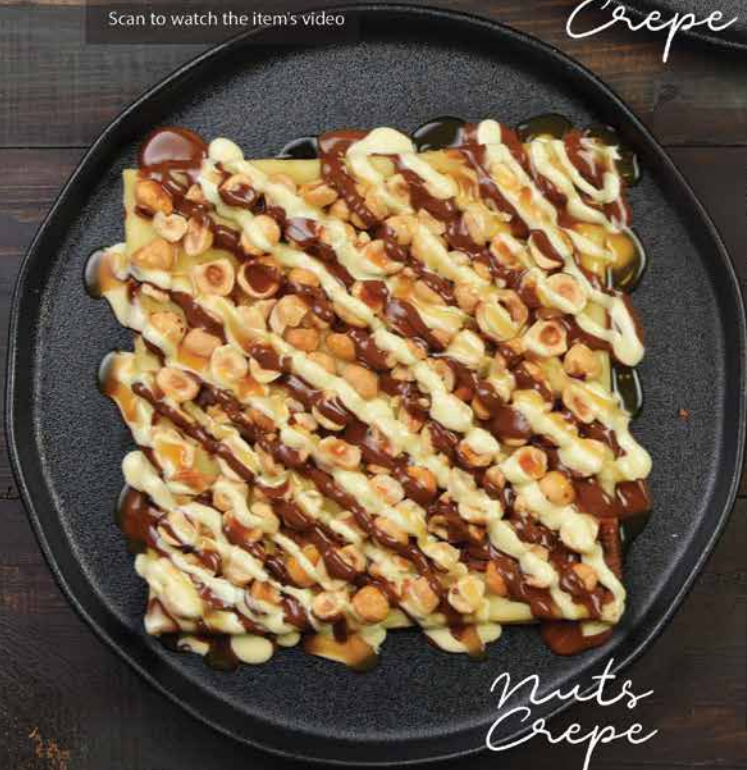
Folded crêpe drizzled with milk, dark, and white Belgian chocolate.



Scan to watch the item's video



Classic Crêpe



NUTS CRÊPE

ORDER NO
19

Folded crêpe topped with hazelnuts and caramel, drizzled with milk and white Belgian chocolate.



Scan to watch the item's video

Nuts Crêpe

Chocolate Guide

Pancake
Pancake

ORDER NO
20

CLASSIC PANCAKE

Five fluffy pancakes served with milk Belgian chocolate.



Scan to watch the item's video



ORDER NO
21

CHOCOLATE BAR PANCAKE

Five pancakes with strawberries, pineapple, and banana, served with cream cheese and Belgian chocolate.



Scan to watch the item's video



Chocolate Bar Pancake



RED VELVET PANCAKES

Two red velvet pancakes layered with brownies, strawberries, and cream cheese, drizzled with white Belgian chocolate.



Scan to watch the item's video

*Red
Velvet
Pancake*



For nutritional facts and allergy information, please refer to the QR code on the first page.



PISTACHIO PANCAKES

Two pistachio-flavored pancakes layered with brownies, and cream cheese, smothered with creamy pistachio sauce and sprinkled with pistachios.



Scan to watch the item's video

*Pistachio
Pancake*



For nutritional facts and allergy information, please refer to the QR code on the first page.



CHOCOLATE BURGER

Two pancakes layered with brownies, cream cheese, strawberries, and pineapple, topped with milk and white Belgian chocolate.



Scan to watch the item's video

*Chocolate
Burger*



BROWNIE BURGER

Two chocolate pancakes layered with brownies, cream cheese, strawberries, and banana, topped with Belgian chocolate.



Scan to watch the item's video

*Brownie
Burger*





LOTUS[®] PANCAKES

Five fluffy pancakes, served with creamy Lotus[®] sauce, and a scoop of Lotus[®] ice cream in a cone.



Scan to watch the item's video

*Lotus[®]
Pancake*



Lotus[®] is a registered trademark of Lotus[®] Bakeries, we are not affiliated with, sponsored by, or endorsed by Lotus[®] Bakeries.

For nutritional facts and allergy information, please refer to the QR code on the first page.



BROWNIE WAFFLE

A semicircle waffle with cream cheese, brownies, and strawberries, topped with Belgian chocolate.



Scan to watch the item's video



Scan to watch the item's video



*Brownie
Waffle*



CHOCOLATE WAFFLE

A semicircle waffle topped with Belgian chocolate.

*Chocolate
Waffle*

For nutritional facts and allergy information, please refer to the QR code on the first page.

LOTUS[®] WAFFLE

ORDER NO
29

Two Lotus[®] flavored waffles, filled with crème patisserie topped with crushed Lotus[®] biscuits, topped with Lotus[®] sauce and white Belgian chocolate.



Scan to watch the item's video

OREO[®] WAFFLE

ORDER NO
30

Two OREO[®] flavored waffles, layered with fresh cream and crushed OREO[®], topped with milk and white Belgian chocolate.



Scan to watch the item's video

Lotus[®]
Waffle

Oreo[®]
Waffle

OREO[®] and the OREO[®] wafer design are trademarks of Mondelez International Group.

Lotus[®] is a registered trademark of Lotus[®] Bakeries, we are not affiliated with, sponsored by, or endorsed by Lotus[®] Bakeries.

For nutritional facts and allergy information, please refer to the QR code on the first page.

CINNAMON WAFFLE

ORDER NO
31

A semicircle waffle with cream cheese, banana, and a sprinkle of cinnamon, drizzled with Belgian chocolate.



Scan to watch the item's video

FRUITS WAFFLE

ORDER NO
32

A semicircle waffle with fresh strawberries, pineapple, and banana, drizzled with Belgian chocolate.



Scan to watch the item's video

Fruits
Waffle

For nutritional facts and allergy information, please refer to the QR code on the first page.



In Pan
In Pan

COOKIES IN A PAN

Layer of cookies filled with chocolate dough, topped with milk chocolate and a scoop of vanilla ice cream, served with two cups of strawberry and cream cheese.



Scan to watch the item's video

*Cookies
in Pan*



In Pan
In Pan

KUNAFI PAN

Kunafa filled with our special cream and Belgian chocolate, topped with pistachio ice cream and crushed pistachios.



Scan to watch the item's video

*Kunafa
Pan*





Oreo®
Pan

OREO® PAN

OREO® cookie dough filled with white chocolate, topped with Belgian chocolate and a scoop of Oreo® ice cream.



Scan to watch the item's video



OREO® and the OREO® wafer design are trademarks of Mondelez International Group.

For nutritional facts and allergy information, please refer to the QR code on the first page.



LOTUS® PAN

A cookie layer filled with Lotus® biscuit dough, topped with milk chocolate, served with a scoop of Lotus® ice cream.



Scan to watch the item's video



Lotus®
Pan

Lotus® is a registered trademark of Lotus® Bakeries, we are not affiliated with, sponsored by, or endorsed by Lotus® Bakeries.

For nutritional facts and allergy information, please refer to the QR code on the first page.

ORDER NO
37

CREAMY COOKIES

Round cookies filled with cream cheese and vanilla ice cream, topped with a shot of espresso, and drizzled with milk and white chocolate.



Scan to watch the item's video



Creamy Cookies

ORDER NO
38

SWEET MOUNTAIN

Eleven éclairs filled with light crème pâtissierie, coated with Belgian chocolate.



Scan to watch the item's video



Sweet Mountain

Premium
Premium

ORDER NO
39

LOTUS[®] MILK CAKE

Vanilla sponge cake soaked in Lotus[®] flavored sauce, topped with light cream.



Scan to watch the item's video

*Lotus[®]
Milk
Cake*

Chocolate Guide

Chocolate Guide

Premium
Premium

ORDER NO
40

SAFFRON MILK CAKE

Vanilla sponge cake soaked in saffron-flavored sauce, topped with light cream.



Scan to watch the item's video

*Saffron
Milk
Cake*

Lotus[®] is a registered trademark of Lotus[®] Bakeries, we are not affiliated with, sponsored by, or endorsed by Lotus[®] Bakeries.

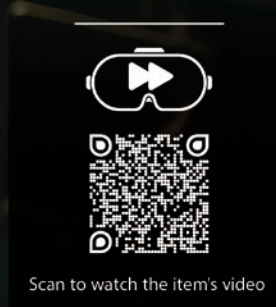
For nutritional facts and allergy information, please refer to the QR code on the first page.

For nutritional facts and allergy information, please refer to the QR code on the first page.



TIRAMISU MILK CAKE

vanilla sponge saturated in coffee-infused milk and finished with elegant whipped cream.



Scan to watch the item's video

*Tiramisu
Milk
Cake*



CHOCO PLATTER

A platter featuring seven varieties of sweets and fresh fruit, served with warm chocolate fondue.



Scan to watch the item's video



*Choco
Platter*

Premium
Premium

Chocolate Guide

ORDER NO
43



CHOCOLATE PIZZA

Choux pastry base topped with milk and white Belgian chocolate.



Scan to watch the item's video

*Chocolate
Pizza*



Chocolate Guide

Premium
Premium

ORDER NO
44



FRUITS PIZZA

Choux pastry base topped with milk and white Belgian chocolate, banana, and strawberries.



Scan to watch the item's video

*Fruits
Pizza*



Premium
Premium

Chocolate Guide

Chocolate Guide

Premium
Premium

ORDER NO
45

VOLCANO CHOCOLATE

Classic English cake topped with milk
and white Belgian chocolate.

*Volcano
Chocolate*



Scan to watch the item's video



ORDER NO
46

LOTUS[®] LAVA

Layers of Lotus[®] cake, Lotus[®] ice cream, and
Lotus[®] sauce, topped with Lotus[®] crunch.

*Lotus[®]
Lava*



Scan to watch the item's video



Lotus[®] is a registered trademark of Lotus[®] Bakeries, we are not affiliated with, sponsored by, or endorsed by Lotus[®] Bakeries.

For nutritional facts and allergy information, please refer to the QR code on the first page.

For nutritional facts and allergy information, please refer to the QR code on the first page.



BROWNIES IN A BOWL

House-made brownie cubes with vanilla ice cream, drizzled with milk and white Belgian chocolate.

*Brownies
in a Bowl*



Scan to watch the item's video



CHOCOLATE BAR BOWL

Éclairs, brownies, strawberries, and cream cheese, served with two layers of Belgian chocolate.



Scan to watch the item's video

*Chocolate
Bar Bowl*

ORDER NO
49

FRUITS IN A BOWL

Fresh strawberries, pineapple, and banana, drizzled with milk and white Belgian chocolate.



*Fruits
in a Bowl*



Scan to watch the item's video

ORDER NO
50

CRUNCHY ICE CREAM

Vanilla ice cream topped with Rice Krispies® drizzled with milk and white Belgian chocolate.



*Crunchy
Ice Cream*



Scan to watch the item's video

Rice Krispies is a registered trademark of Kellogg company

ORDER NO
51

CHOCOLATMOU

Chocolate ice cream layered with mocha sauce, nuts, milk and white Belgian chocolate.



Chocolat mou



Scan to watch the item's video

ORDER NO
52



CHOCO FRENZY

A large platter with bowls of strawberries, pineapple, bananas, marshmallows, brownies, éclairs, and cookies, served Belgian chocolate fondue. (Family size)



Scan to watch the item's video

*Choco
Frenzy*



Cheesy
Cheesy

Chocolate Guide®

ORDER NO
53

LOTUS® KUNAF CHEESECAKE

Lotus® cheesecake, filled with kunafa and Lotus® sauce, topped with Lotus® crunch.

*Lotus®
Kunafa
CheeseCake*



Scan to watch the item's video



Lotus® is a registered trademark of Lotus® Bakeries, we are not affiliated with, sponsored by, or endorsed by Lotus® Bakeries.

For nutritional facts and allergy information, please refer to the QR code on the first page.

Chocolate Guide®

ORDER NO
54 2

HONEY BAKLAVA CHEESECAKE

Layers of cheesecake and crispy baklava pastry, topped with crushed pistachios and saffron honey sauce.



Scan to watch the item's video



*Honey
Baklava
CheeseCake*

Cheesy
Cheesy

For nutritional facts and allergy information, please refer to the QR code on the first page.

Cheesy
Cheesy

Chocolate Guide®

ORDER NO
55

SAN SEBASTIAN CHEESECAKE

Our version of the famous San Sebastian cheesecake, topped with Belgian milk chocolate.



Scan to watch the item's video



*San
Sebastian
Cheesecake*

For nutritional facts and allergy information, please refer to the QR code on the first page.

Chocolate Guide®

ORDER NO
56



COOKIES TART

Baked, crunchy cookie dough filled with rich milk chocolate.

PREORDER



Scan to watch the item's video

*Cookies
Tart*



For nutritional facts and allergy information, please refer to the QR code on the first page.

Chocolate Guide®



4-6

HEART PANCAKE

A heart-shaped layered cake made of pancakes and brownie, filled with cream cheese and strawberries.

PREORDER



Scan to watch the item's video

Chocolate Guide®



6-8

BIRTHDAY PANCAKE

A round layered cake made of pancakes and brownie, filled with cream cheese and strawberries.

PREORDER



Scan to watch the item's video



ORDER NO.
59

BROWNIES

House-made brownies served with a scoop of vanilla, drizzled with milk and white Belgian chocolate.



Scan to watch the item's video



ORDER NO.
60

BROWNIES PIZZA

Brownie slice topped with cream cheese, strawberries, pineapple, banana, and Belgian chocolate.



Scan to watch the item's video



ORDER NO.
61

LAZY CAKE

Homemade dense chocolate-biscuit cake, topped with Belgian chocolate.



Scan to watch the item's video





BANANA SPLIT

Two banana pieces with vanilla ice cream, drizzled with milk and white Belgian chocolate, and topped with hazelnuts.



Scan to watch the item's video



Banana Split



Classic Fondant

CHOCOLATE FONDANT

A rich, warm chocolate cake with a decadent molten center, paired with a scoop of creamy vanilla ice cream.



Scan to watch the item's video



Milkshake
Milkshake

Chocolate Guide

Chocolate Guide

Milkshake
Milkshake



ORDER NO.
64

Chocolate
Milkshake



ORDER NO.
65

Coffee
Milkshake

ORDER NO.
66

Vanilla
Milkshake



ORDER NO.
67

Strawberry
Milkshake



Milkshake
Milkshake

Chocolate Guide

Chocolate Guide

Milkshake
Milkshake



ORDER NO.
68

Popcorn
Milkshake



ORDER NO.
69

Cookie
Milkshake



ORDER NO.
70

Oreo[®]
Milkshake



ORDER NO.
71

Banana
Milkshake



ORDER NO.
72

Pistachio
Milkshake

OREO[®] and the OREO[®] wafer design are trademarks of Mondelez International Group.

For nutritional facts and allergy information, please refer to the QR code on the first page.

For nutritional facts and allergy information, please refer to the QR code on the first page.



ORDER NO.
73

Blueberry
Smoothie



ORDER NO.
74

Raspberry
Smoothie



ORDER NO.
75

Pineapple
Smoothie



ORDER NO.
76

Mango
Smoothie



ORDER NO.
77

Strawberry
Smoothie



ORDER NO.
78

Cookies
Frappe



ORDER NO.
79

Lotus®
Frappe



ORDER NO.
80

Chocolate
Frappe



ORDER NO.
81

Caramel
Frappe

ORDER NO.
84

Ice Tea
Lemon

ORDER NO.
82

Ice Tea
Peach

ORDER NO.
83

Ice Tea
Mango

ORDER NO.
85

Ice Tea
Raspberry

ORDER NO.
86

Ice Tea
Mix Berries



Iced Cappuccino



Iced Mocha



Milk & Banana



Hot Chocolate
Hot Chocolate

Chocolate Guide

Chocolate Guide

Hot Chocolate
Hot Chocolate

ORDER NO.
92

Dark
HotChocolate

ORDER NO.
93

Cinnamon
HotChocolate

ORDER NO.
91

White
HotChocolate

ORDER NO.
94

Mallow
HotChocolate

ORDER NO.
90

Milk
HotChocolate

For nutritional facts and allergy information, please refer to the QR code on the first page.

For nutritional facts and allergy information, please refer to the QR code on the first page.

Coffee Mocha
Coffee Milk

Chocolate Guide

Chocolate Guide

Coffee Mocha
Coffee Milk

ORDER NO.
95

Mochaccino

ORDER NO.
96

Caramel
Macchiato

ORDER NO.
97

Spiced Latte

ORDER NO.
99

Café Latté

ORDER NO.
98

Cappuccino

SNICKERS® is a registered trademark of Mars, Incorporated and/or its affiliates.

For nutritional facts and allergy information, please refer to the QR code on the first page.

For nutritional facts and allergy information, please refer to the QR code on the first page.

Black Coffee
Black Coffee

Chocolate Guide®

Chocolate Guide®

Black Coffee
Black Coffee

ORDER NO. 102
Espresso
Con Panna

ORDER NO. 103
Caffè
Americano

ORDER NO. 100
Espresso

ORDER NO. 101
Espresso
Macchiato

ORDER NO. 104
Turkish
Coffee

SINGLE
DOUBLE

For nutritional facts and allergy information, please refer to the QR code on the first page.

For nutritional facts and allergy information, please refer to the QR code on the first page.

ORDER NO.
105

Regular Tea

ORDER NO.
106

Tealatte

ORDER NO.
107

Karak Tea



